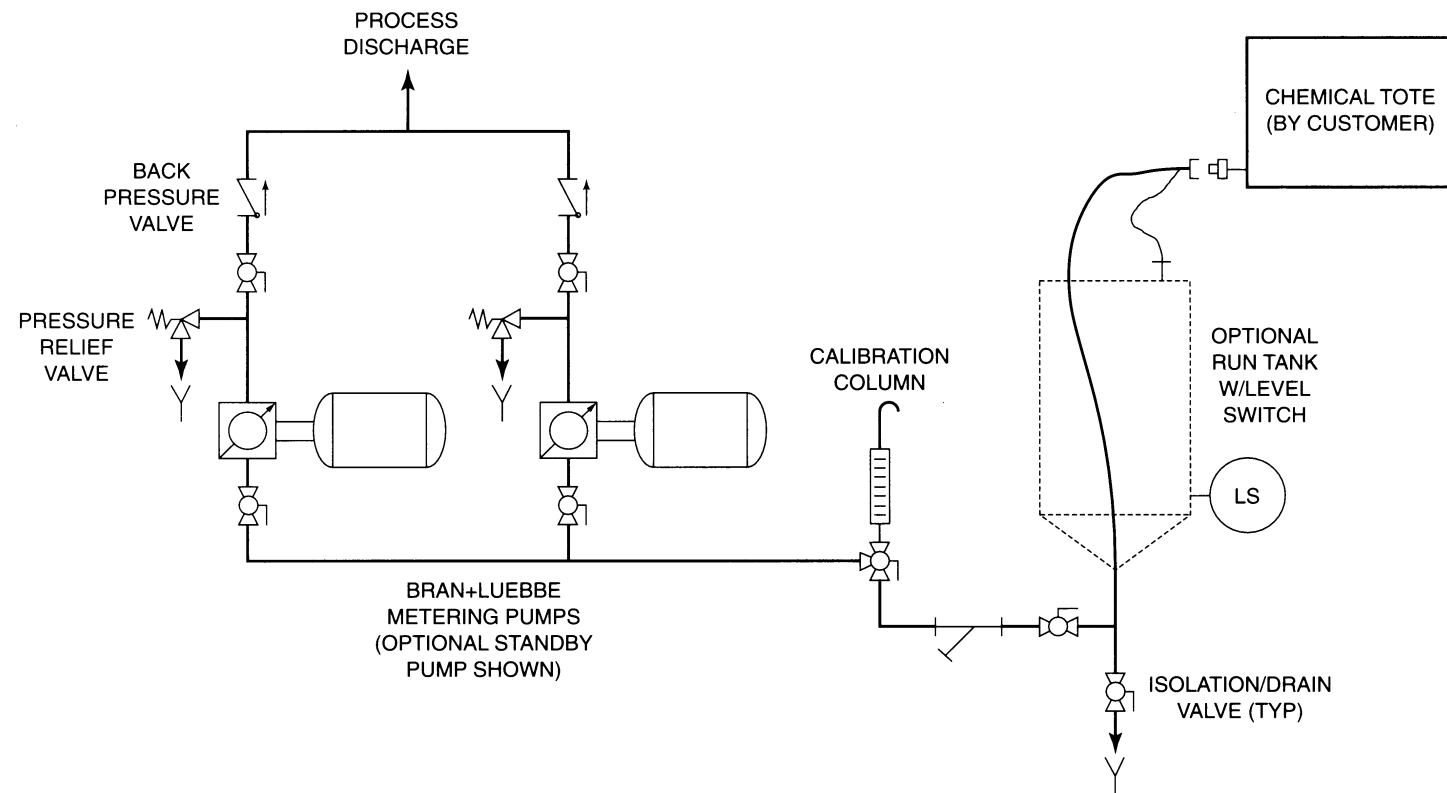


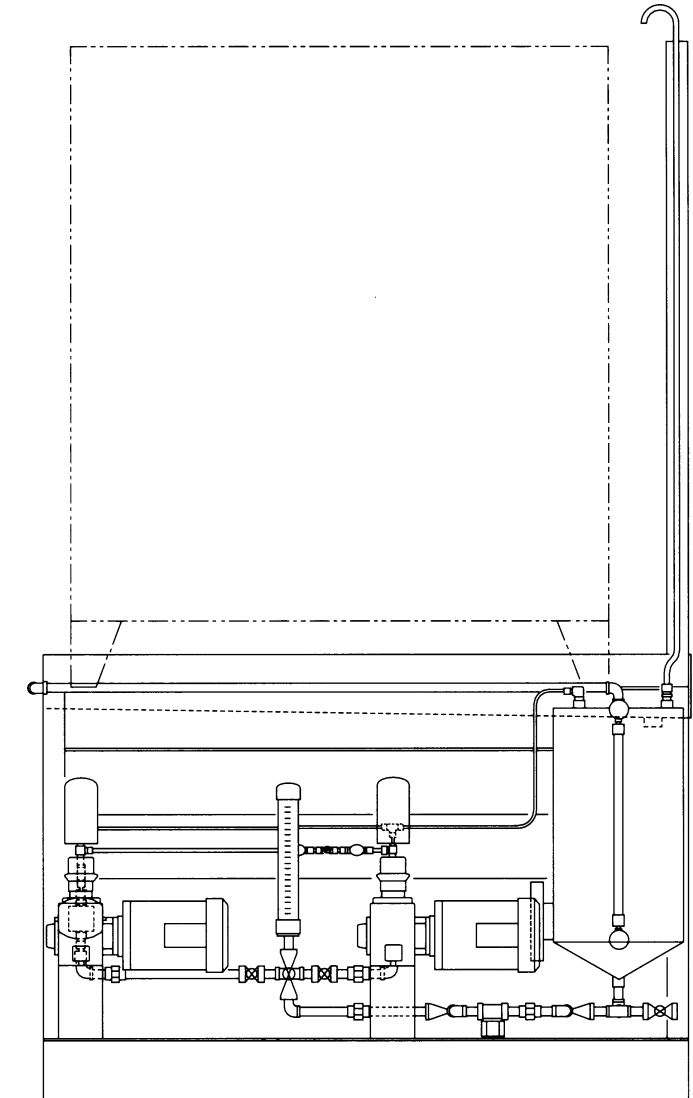
## Typical Tote Metering System



Items	Standard	Options
<b>Pump</b>	<ul style="list-style-type: none"> <li>■ Packed plunger</li> <li>■ Manual stroke adjustment</li> </ul>	<ul style="list-style-type: none"> <li>■ Diaphragm</li> <li>■ Electric stroke adjustment</li> <li>■ Installed spare</li> </ul>
<b>Piping</b>	<ul style="list-style-type: none"> <li>■ Threaded 316 SS</li> </ul>	<ul style="list-style-type: none"> <li>■ Welded 316 SS</li> <li>■ Plastic</li> </ul>
<b>Structural</b>	<ul style="list-style-type: none"> <li>■ Painted carbon steel</li> </ul>	<ul style="list-style-type: none"> <li>■ 304 SS</li> </ul>
<b>Controls</b>	<ul style="list-style-type: none"> <li>■ Direct to customer's MCC and control system</li> </ul>	<ul style="list-style-type: none"> <li>■ Local/remote interface</li> </ul>
<b>Additional Features</b>		<ul style="list-style-type: none"> <li>■ Calibration column</li> <li>■ Empty tote run tank/alarm</li> <li>■ Flowmeter</li> </ul>

Call Bran+Luebbe at 1-888-917-PUMP for more information on the TU-50 Standard Tote Unloader.

# TU-50 Standard Tote Unloader

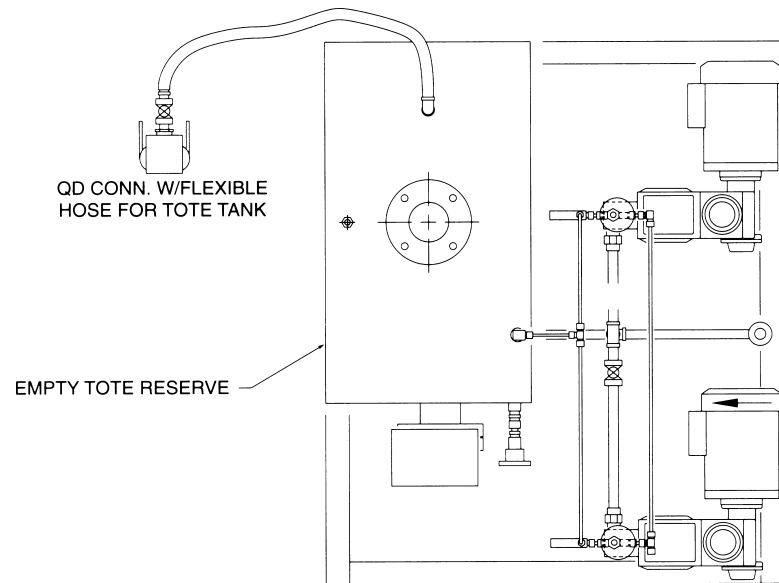


- Increase Efficiency
- Reduce Cost
- Increase Safety
- Consistent Quality

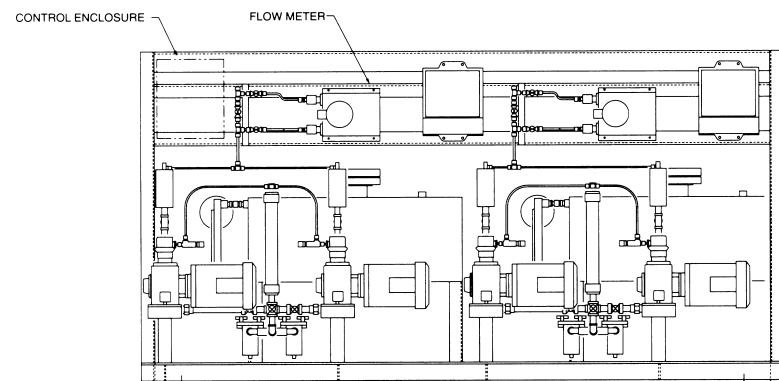
# Compact ♦ Modular ♦ Reliable ♦ Self-contained

The Bran+Luebbe TU-50 Tote Unloader is a pre-engineered chemical injection package. It provides a permanent installation for metering relatively low flow rates without the need for expensive chemical storage tanks and custom designed metering systems.

Increased operator safety is realized by using the chemical supplier's D.O.T. approved totes directly connected, via dry break couplings, to the metering pump. When handling highly aggressive or hazardous chemicals, additional safety is provided by the use of diaphragm pumpheads. Housekeeping is improved by the reduction in chemical handling and the integral drip tray with drain for spill containment.



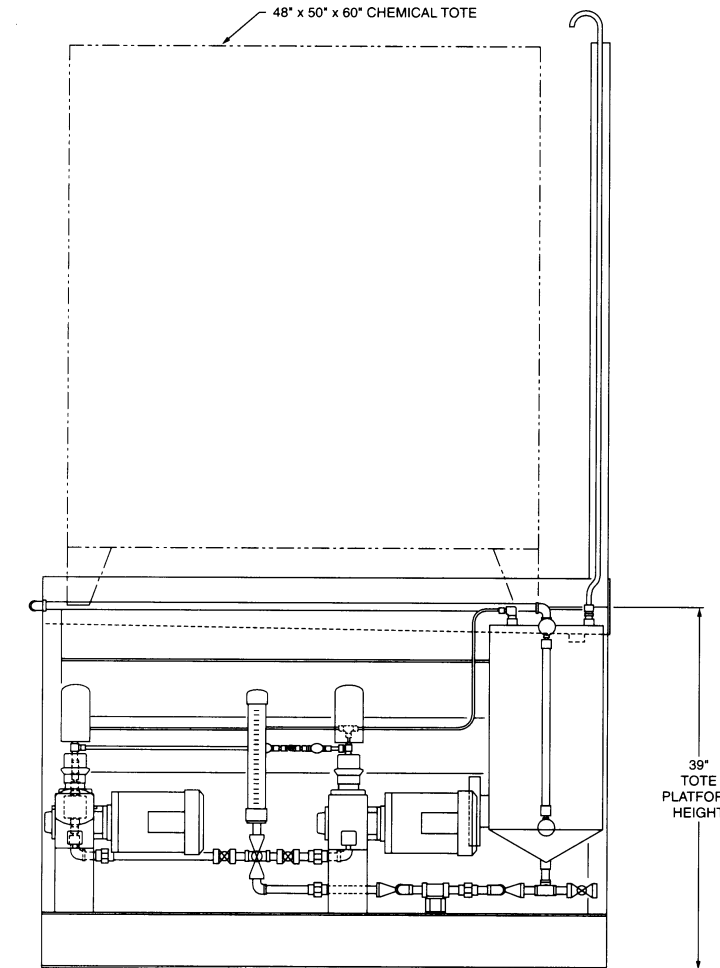
Single TU-50, without tote support  
(4' L x 3.5' W x 2' H)



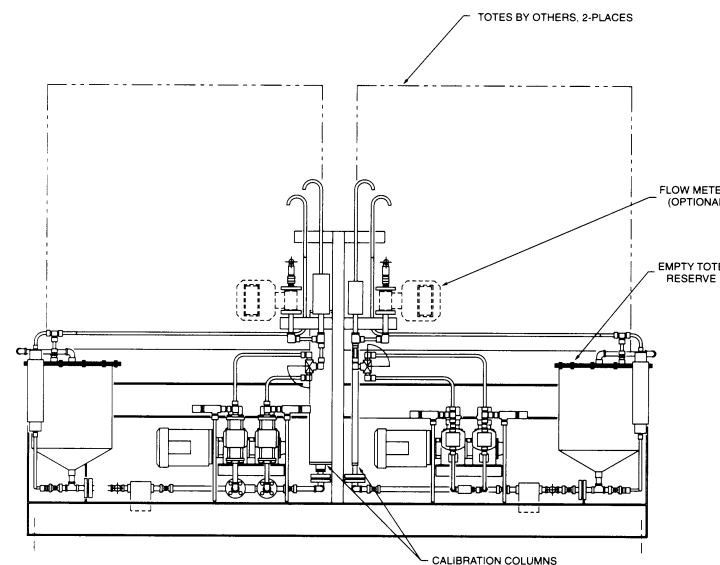
Dual TU-50, without tote support  
(8' L x 4' W x 3.5' H)

The TU-50 Tote Unloader uses either Bran+Luebbe's 'P' pump or ProCam range, both providing durability, high operational reliability and long service life. Their design ensures high accuracy and repeatability of injection.

Several versions are available ranging from single pump with no tote support to dual duty/standby pump configurations. Options include tote empty alarm (providing the operator ample time to change the supply tote), calibration vessels, flowmeters, and remote interface.



Single TU-50, with tote support  
(5' L x 7\"/>



Dual TU-50, with tote support  
(5' L x 7\"/>

## System Benefits:

- Pre-engineered package reduces installation costs
- Increased safety – minimal operator contact with chemicals
- Metering accuracy and repeatability results in chemical cost savings
- Space savings due to elimination of storage tanks
- High reliability – minimal downtime