

# Service



# The international service platform:

**A conglomerate of the World's leading manufacturers and developers of process components for transporting, proportioning, mixing, grinding and pumping.**



The Bran+Luebbe company is one of the world's most reputable manufacturers of proportioning and process pump systems. We have the highest quality standards, pioneering innovations and comprehensive know-how. The company's products are primarily used in the chemical, oil and gas industry, in the production of pharmaceuticals and cosmetics, in the food and drink industry as well as in gas and water management.



The Lightnin company can look back on a long tradition and is now the world's leading producer of mixing systems. These solutions are used in industries such as pharmaceuticals, chemical, water, waste water, biotechnology as well as in the manufacture of paper and wood pulp. Another field of application is the mining of ores and minerals, such as gold, aluminium and nickel.



For more than a century Waukesha Cherry-Burrell has been a leading supplier of fluid handling and process equipment including pumps, valves, fittings, and heat exchangers. The company and its network of stocking distributors are dedicated to raising productivity, product quality and profitability for their equipment and systems customers. From this dedication has come advancements in equipment development and applications; advancements that have changed the way process designers solve problems.



The Plenty company incorporated in 1790 specializes in the production of pumps, filters and mixing plants for gases, fluids and suspensions. We have a comprehensive expertise in the field of crude oil and natural gas drilling. Our products are also used in the chemical, oil storage, palmoil and paper and pulp industries.



## Service has a name!

### Total solution provider

The names of Bran+Luebbe, Lightnin, Plenty and Premier Mill have stood for maximum quality, economy, safety and reliability dating back to 1790. Thanks to the combination of these high quality companies, we can offer a comprehensive product range and customized all-round solutions as well as comprehensive services. Around the clock and around the world.

# 1

SPARE PARTS/ WEAR AND TEAR PARTS

### Always on hand

Downtimes cost money. That's why we strive to keep downtime down to a minimum for our customers. Our central warehouse in Europe has more than 40,000 parts on stock for you from a wide range of product lines. Direct service teams and sophisticated logistics make sure the parts are delivered and installed as quickly as possible. In many cases, waiting time for spare parts is less than 24 hours.



# 2

SERVICE/MAINTENANCE/COMMISSIONING

### Service from A to Z

We stand by our products for the entire service life of your equipment. Our service teams are on site during set-up and take charge of all important testing and maintenance tasks. That way, they can identify and eliminate any sources of errors in advance before breakdowns occur. Of course, corrective maintenance is performed with genuine spares and consumables.



# 3

CONSULTING

### Direct contact

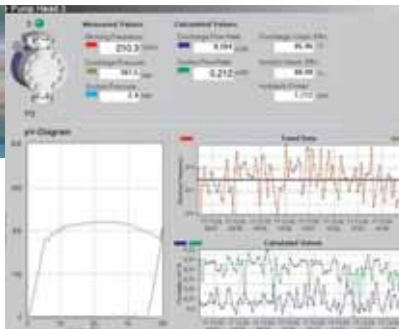
We immediately diagnose errors and provide consultation on our **Service Hotline**. To reach our hotline, just dial **0049 (40) 5 22 02 - 405**. A team of trained service technicians are ready to assist you, even with procedural questions. You can also order spare parts or reach our service team by phone, fax or e-mail.



## 4 REMOTE DIAGNOSTIC

### Prevention is better than cure!

Permanent, fully automatic performance monitoring is now available for metering pumps. Bran+Luebbe's NOVALINK-CSM On-line Diagnostics System continuously analyses, documents and reports the current status of the pump's key performance parameters without interrupting its operation, and transmits the data to a local or remote control computer. The test data can help to plan the optimum maintenance schedule and be used to reduce the time and cost of repairs.



## TRAINING

### Knowing how!

Sharing our know-how with you. The extensive range of training seminars is available to all our customers. Our courses are conducted by specially qualified experts. They convey to your employees the special knowledge they'll need to ensure an optimum level of safety and reliability and long service life for your plant.

Our training program includes:

**Operator training**

**Maintenance and documentation training**

**Basic training in safety technology**

## 5 REPAIRS

### Problems? No problem!

Fast and thorough – that's how the service teams work. After performing a careful diagnosis of the trouble - for e.g. with our Off-line Diagnostics System NOVALINK-DSM - we give you a fixed quote so you are clear about the costs. After corrective maintenance, we carry out comprehensive performance tests and test runs to ensure your plant has the best basis for trouble-free operation.



## 7 MAINTENANCE CONTRACTS

### According to plan

We can guarantee long service life and low susceptibility to malfunctions through routine and corrective maintenance at regular intervals. In this area we offer a whole range of different maintenance contracts which can be customized to your individual needs.

Choose from such contracts as:

**Full maintenance**

**Modular maintenance**

The businesses making up the **SPX Flow Technology** segment design, manufacture and market solutions and products used to process, blend, meter and transport fluids as well as air and gas filtration and dehydration products serving sanitary, biopharmaceutical, chemical, marine, oil and gas, power, industrial and municipal markets worldwide.



For global service and support please see: <http://www.branluebbe.com>

## Our service at a glance:

### Customer Service

Hotline	0049 (40) - 52 20 2 - 405
Field service technicians	0049 (40) - 52 20 2 - 428
Technical Information	0049 (40) - 52 20 2 - 237 /-360
Inhouse repairs	0049 (40) - 52 20 2 - 407
Fax	0049 (40) - 52 20 2 - 447

### Spare Parts

Offers	0049 (40) - 52 20 2 - 335
Order handling	0049 (40) - 52 20 2 - 336
Fax	0049 (40) - 52 20 2 - 454
E-Mail	blservicepumps@spx.com



# SPX®

## PROCESS EQUIPMENT

Your local contact



Bran+Luebbe GmbH, Werkstraße 4, 22844 Norderstedt  
Phone: 0049 (40) 52 20 2 - 0 - Fax: 0049 (40) 52 20 2 -444 - E-Mail: bl@spx.com

For more information about our worldwide locations, approvals, certifications, and local representatives, please visit [www.spx.com](http://www.spx.com).

SPX Corporation reserves the right to incorporate our latest design and material changes without notice or obligation.

Design features, materials of construction and dimensional data, as described in this bulletin, are provided for your information only and should not be relied upon unless confirmed in writing. Certified drawings are available upon request.

Issued: 1.0 - 1,0 - E 06/2008

© 2008 SPX Corporation