

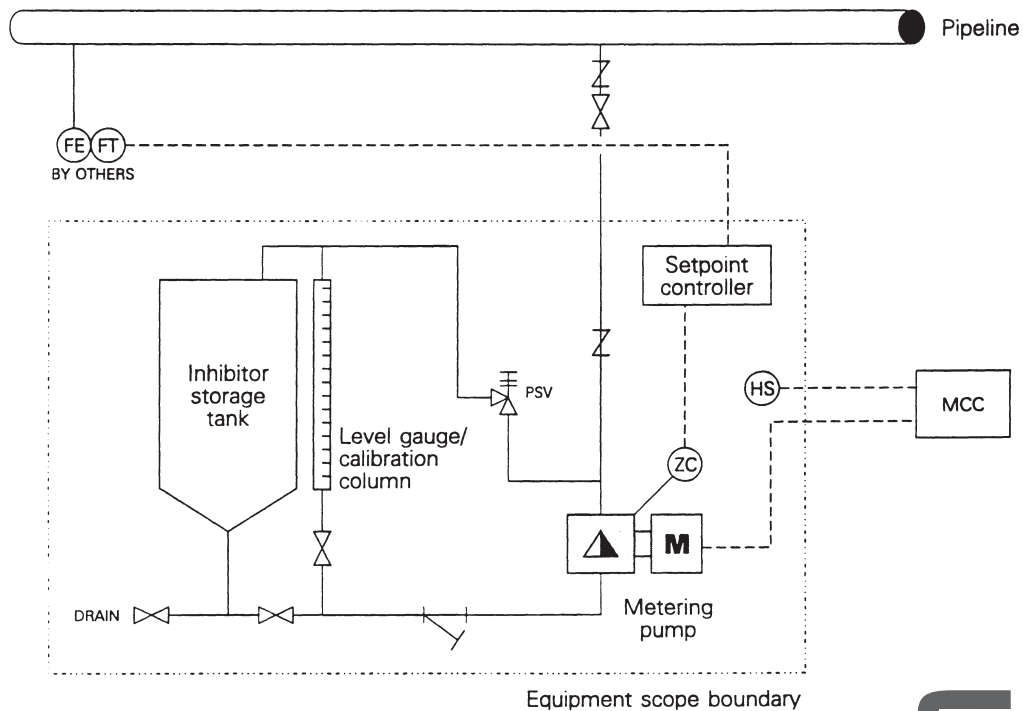


AutoBlend Systems Pipeline Proportional Injection

Who would benefit?

- Oil and gas pipeline transmission companies.
- Pipeline service companies.
- Production platforms.
- Pipeline engineers.
- Offshore production personnel.

Simplified process diagram



Why should you be interested?

- Reduced chemical consumption.
- Increased reliability reduces interface.
- ROI through better control of injection rates.
- Equipment is highly reliable.
- Standard packaging of Bran+Luebbe equipment keeps costs down.

Bran+Luebbe's solution

- By automatically following your pipeline's transmission rates, a Bran+Luebbe system can set inhibitor proportioning rates to match actual requirements.
- Controlled NPSH chemical storage facilities with inventory control are available.

Advantages

- Metering pumps (either packed plunger or hydraulically actuated diaphragm) meet API-675 requirements.
- Accurate, controlled chemical consumption.
- Maintenance and interface hours reduced.
- Protective coatings available.
- Offers ROI through chemical savings.
- Equipment is highly reliable.
- Standard packaging of Bran+Luebbe equipment keeps costs down.
- Eliminating overdosing provides chemical savings.
- Low maintenance operation.
- Diaphragm pumpheads provide zero emissions.

What technology might the customer have in place?

- Low end, manual capacity control pumps that over-inject anticipated pipeline transmission rates.



Your local contact:



Bran+Luebbe, An SPX Brand
611 Sugar Creek Road, Delavan, WI 53115
Phone: (800) 252-5200 or (262) 728-1900, Fax: (262) 728-4904
E-mail: bl@spx.com

For more information about our worldwide locations, approvals, certifications, and local representatives, please visit www.branluebbe.com.

SPX Corporation reserves the right to incorporate our latest design and material changes without notice or obligation. Design features, materials of construction and dimensional data, as described in this bulletin, are provided for your information only and should not be relied upon unless confirmed in writing.