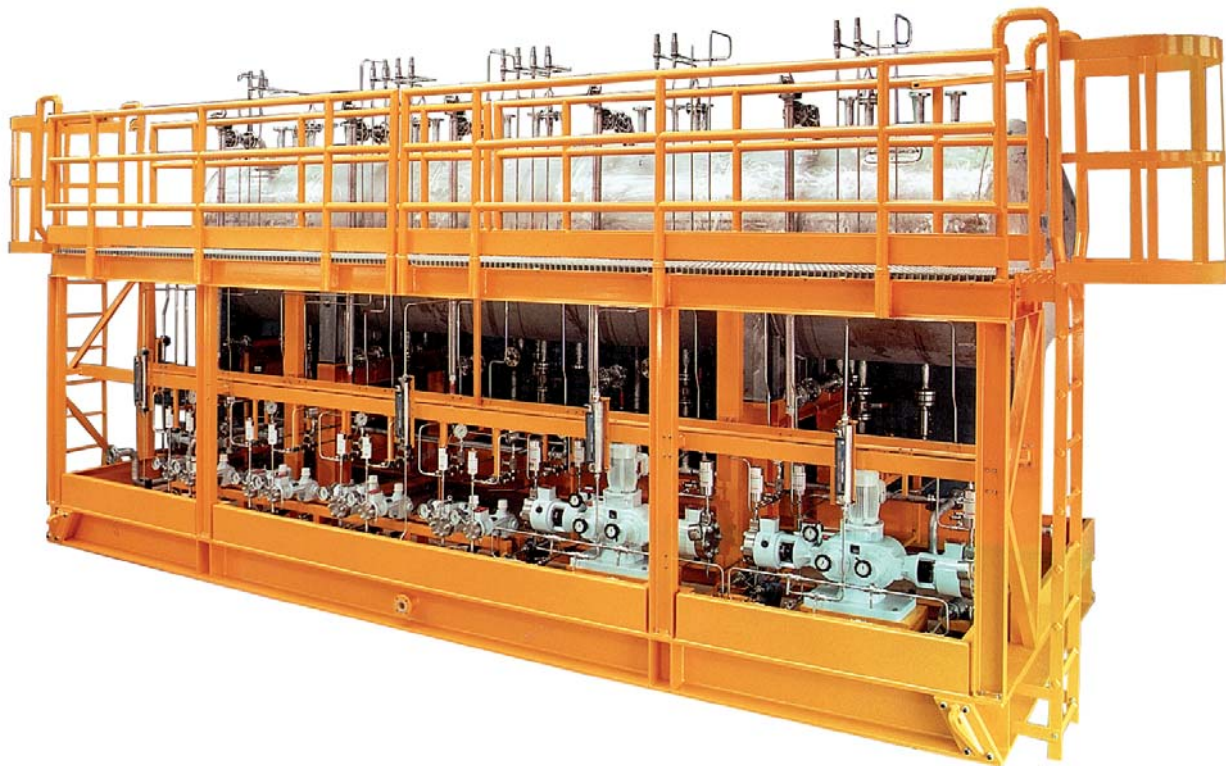




# AutoBlend Systems Offshore Chemical Metering System

## Advantages

- Design, purchasing, building and expert pump selection provided by one company.
- Remote operation with automatic stroke control of pumps.
- Long service life of diaphragm pumps with remote alarm for failure.
- Additional heads can be added for future injection points.
- Variable speed motor or stroke control can be added to inject chemical automatically in proportion to the main flow.

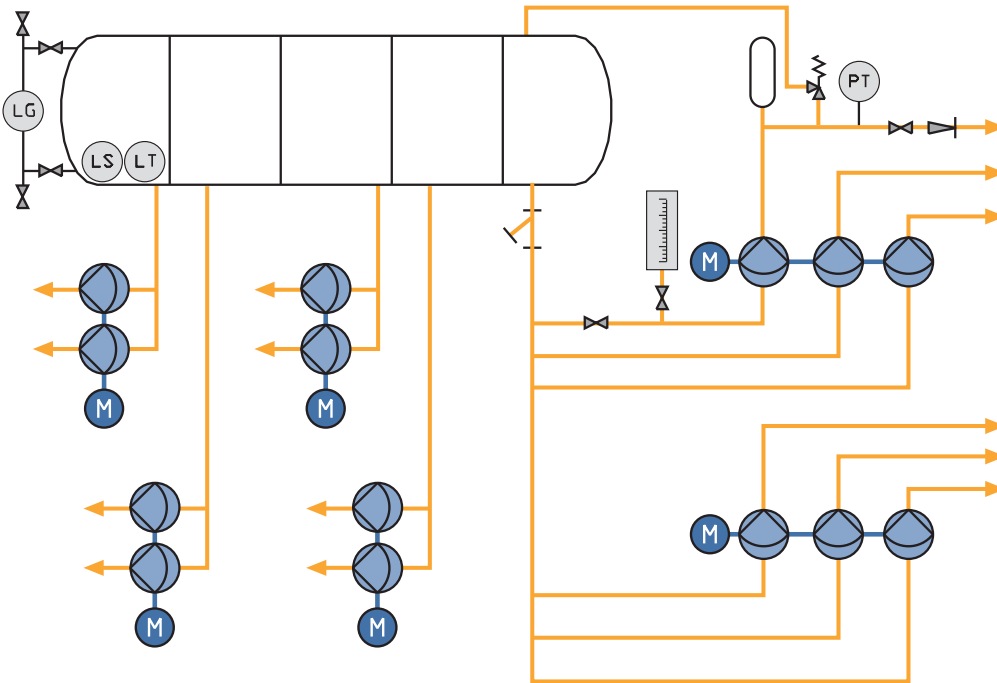


Chemical injection for oil and gas offshore fields is required to treat seawater and associated pipelines before reinjection and for flow assurance.

Seawater treatment consists of metering bactericides, oxygen scavenger, scale and corrosion inhibitors in proportion to the main seawater flow.

For flow assurance pour point depressants, antifoaming agents, wax inhibitors, polymers, scale and corrosion inhibitors, and hydrate inhibitors are injected at high pressures to maintain oil flow and protect oil pipelines.

## Simplified process diagram



Packages are custom built to meet customer specification and space requirements.

## Components

- 4 horizontally combined double-head pumps and 2 vertically combined triple head pumps all of a double-diaphragm design.
- Multi-compartment cylindrical storage tank manufactured in stainless steel (316).
- Suction side calibration facility.
- 12 discharge pulsation dampers.

- 12 discharge relief valves.
- 5 tank level transmitters.

All welded pipework to ASME procedures and approved welder qualifications.

## Automation

- Monitoring of tank levels linked to pump motor shut down when tank is empty.
- Diaphragm condition monitoring and shutdown if pump fails.

**SPX**  
WHERE IDEAS MEET INDUSTRY

Your local contact:

Bran+Luebbe, An SPX Brand  
611 Sugar Creek Road, Delavan, WI 53115  
Phone: (800) 252-5200 or (262) 728-1900, Fax: (262) 728-4904  
E-mail: bl@spx.com

For more information about our worldwide locations, approvals, certifications, and local representatives, please visit [www.branluebbe.com](http://www.branluebbe.com).

SPX Corporation reserves the right to incorporate our latest design and material changes without notice or obligation. Design features, materials of construction and dimensional data, as described in this bulletin, are provided for your information only and should not be relied upon unless confirmed in writing.

Issued: 10/2009 BL-1617

Copyright © 2009 SPX Corporation