



AutoBlend Systems

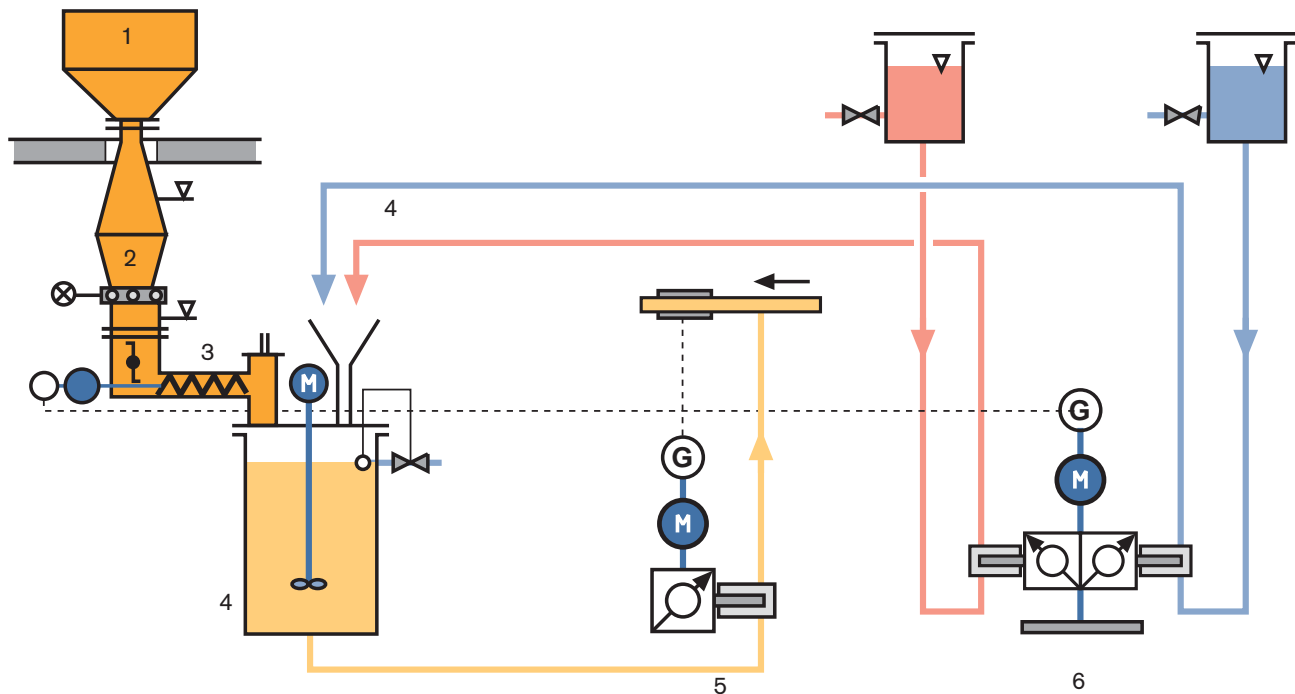
Hydrosulfite Diluting and Metering System

Continuous production and metering of hydrosulfite bleach in the paper industry?

Producing hydrosulfite bleach solution as and when required enables a short holding time with increased bleaching activity and reduced chemical consumption.

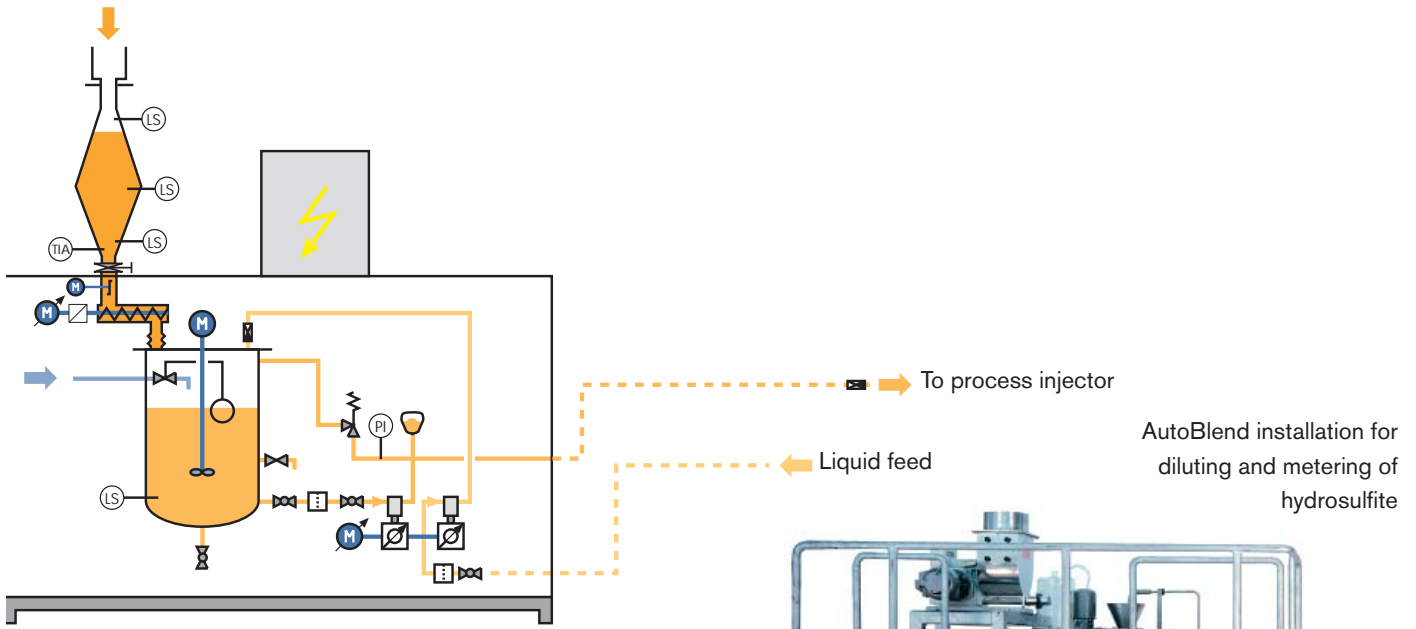
All metering, mixing and control components are combined in a single installation with compact space-saving design. Separate mixing and storage vessels are unnecessary, and the waiting time associated with batch production is eliminated.

Continuous Production



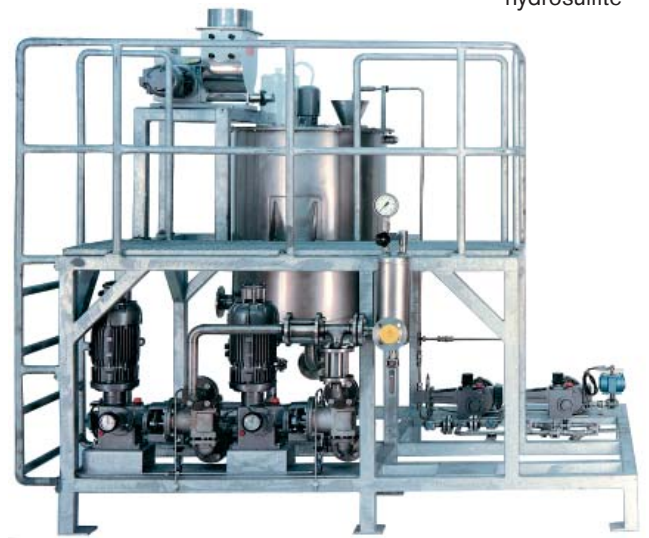
- | | | |
|--------------------------|-------------------|------------------------------|
| 1 Hydrosulfite Container | 3 Screw Feed | 5 Hydrosulfite metering pump |
| 2 Temperature Sensor | 4 Dilution Vessel | 6 NaOH - DTPA metering pump |

Simplified schematic diagram



Production process

Hydrosulfite powder is delivered and stored in a container (1) from which it passes through a feed shaft into a screw feeder (3). The screw feeder delivers a measured quantity of the powder into a dilution vessel fitted with a stirrer. At the same time, water is delivered in controlled volumes via a float valve. The screw feeder for the hydrosulfite powder and the metering pump for sodium hydroxide and complexing agent are controlled in proportion to the flow of pulp by an inductive flow meter, so ensuring that hydrosulfite solution is produced in the correct quantity and proportions according to the pulp feed.



SPX[®]
WHERE IDEAS MEET INDUSTRY

Your local contact:

Bran+Luebbe, An SPX Brand
611 Sugar Creek Road, Delavan, WI 53115
Phone: (800) 252-5200 or (262) 728-1900, Fax: (262) 728-4904
E-mail: bl@spx.com

For more information about our worldwide locations, approvals, certifications, and local representatives, please visit www.branluebbe.com.

SPX Corporation reserves the right to incorporate our latest design and material changes without notice or obligation. Design features, materials of construction and dimensional data, as described in this bulletin, are provided for your information only and should not be relied upon unless confirmed in writing.

Issued: 9/2009 BL-1637

Copyright © 2009 SPX Corporation