

Latex Unloading / Transfer System



- **Increase Efficiency**
- **Reduce Cost**
- **Increase Safety**
- **Consistent Quality**

Compact ♦ Modular ♦ Reliable ♦ Self-contained

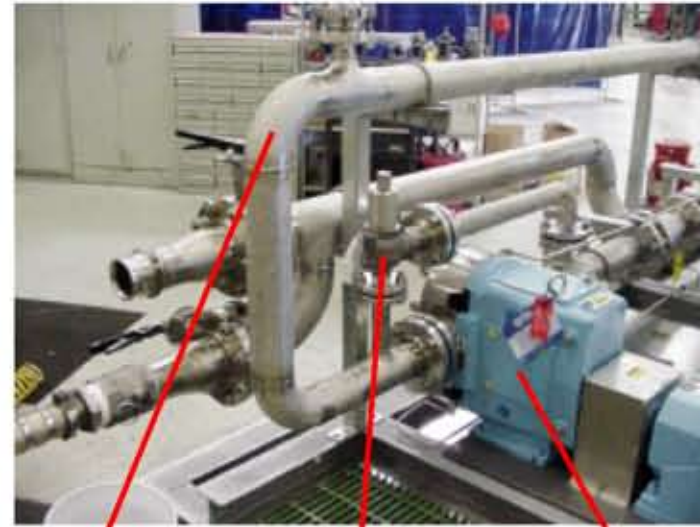
The Bran+Luebbe Latex Unloading / Transfer System is designed to unload over-the-road ISO containers of latex solution to either inside bulk storage vessels or directly to a mixing vessel. A control interface allows for DSC control of the latex transfer rate.

Two Waukesha Cherry-Burrell Model U2 180 Rotary Lobe Pumps are used for latex transfer. The pumps operate at up to 50 GPM (11,355 L/H) rated for 275 psi, 1.5 psia net inlet pressure. The U2 pumps are equipped with double mechanical seals, 316SS wetted parts and twin wing standard clearance alloy 88 rotors.

The control panel is Nema 4 with the following devices mounted on the enclosure door: Power On, Pump A and B pilot lights, Pump A/B and Local/Remote selector switches, Emergency Stop, Start and Stop pushbuttons, Speed potentiometer and Percent Speed readout. The control panel is capable of receiving a 4-20 mA signal for remote pumps speed adjustment. A 3-position operator station with "Start" and "Stop" pushbuttons and a "Pump Running" indicator light, is provided for remote mounting near the bulk storage tanks.

Other components include two bag filters for raw latex 200 - 1700 cps to 250 mesh, two external 175 psig pressure safety relief valves, two 0-300 psig pressure gauges and seven manual butterfly valves. Piping is 304SS Sch. 10 pipe with flanged construction joints and BW fittings. The base frame is epoxy painted carbon steel with deck plate and 4" drip rim.

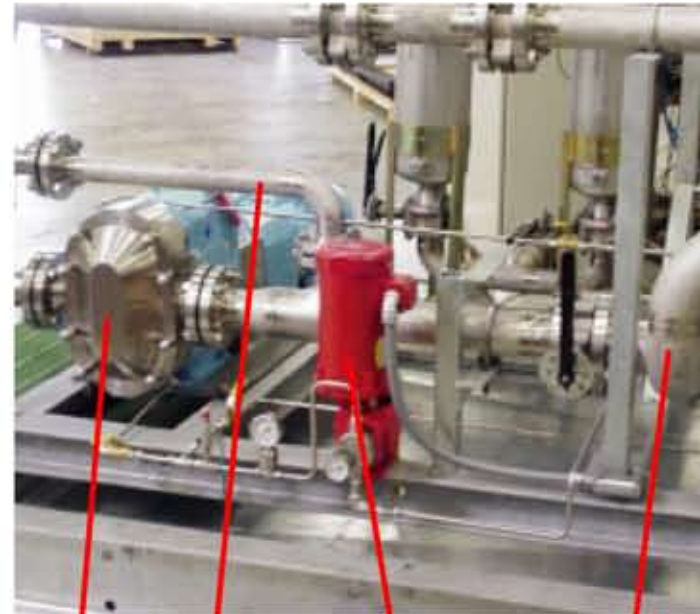
Polymer Transfer A/B & Seal Water Pumps



Pump Discharge to Strainers

175 psig Safety Relief Valve

Polymer Transfer Pump "A"



Polymer Transfer Pump "B"

Transfer Pump Seal Water Supply Pump

Pressure Relief Valve Piping to Pump Suction

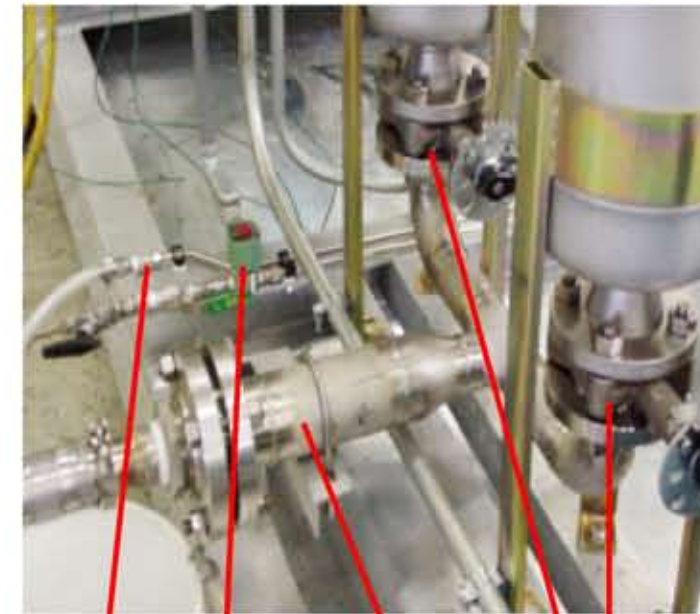
Supply Piping to Transfer

Polymer Strainer Inlet & Discharge Piping



High Capacity Polymer Strainers

Transfer Pump Discharge Piping to Strainers



Seal Water Discharge Piping

Seal Water Inlet Piping & Control Solenoid

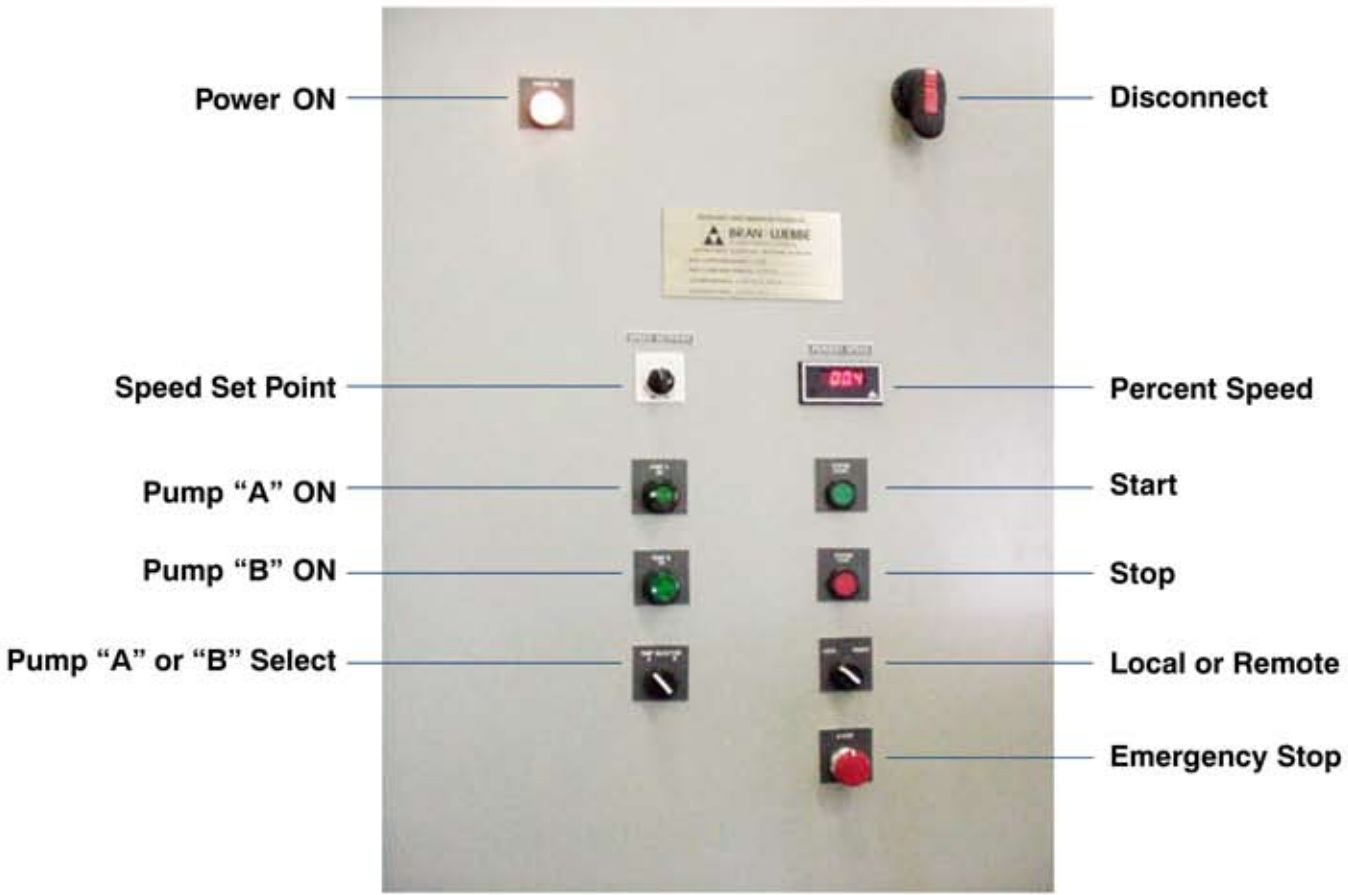
Strainer Outlet to Polymer Storage Tanks

Strainer Outlet Valves

System Benefits:

- Pre-engineered package reduces installation costs
- Increased safety – minimal operator contact with chemicals
- Metering accuracy and repeatability results in chemical cost savings
- Space savings due to elimination of storage tanks
- High reliability – minimal downtime

Main Control Panel



Items	Standard	Options
Pump	<ul style="list-style-type: none"> ■ Rotary Lobe with installed spares 	
Piping	<ul style="list-style-type: none"> ■ Threaded 316 SS 	<ul style="list-style-type: none"> ■ Welded 316 SS ■ Plastic
Structural	<ul style="list-style-type: none"> ■ Painted carbon steel 	<ul style="list-style-type: none"> ■ 304 SS
Controls	<ul style="list-style-type: none"> ■ Direct to customer's MCC and control system 	<ul style="list-style-type: none"> ■ Local/remote interface
Additional Features		<ul style="list-style-type: none"> ■ ISO container empty alarm ■ Flow meters

**Call Bran+Luebbe at 1-888-917-PUMP
for more information on the
Latex Unloading / Transfer System.**

