



AutoBlend Systems

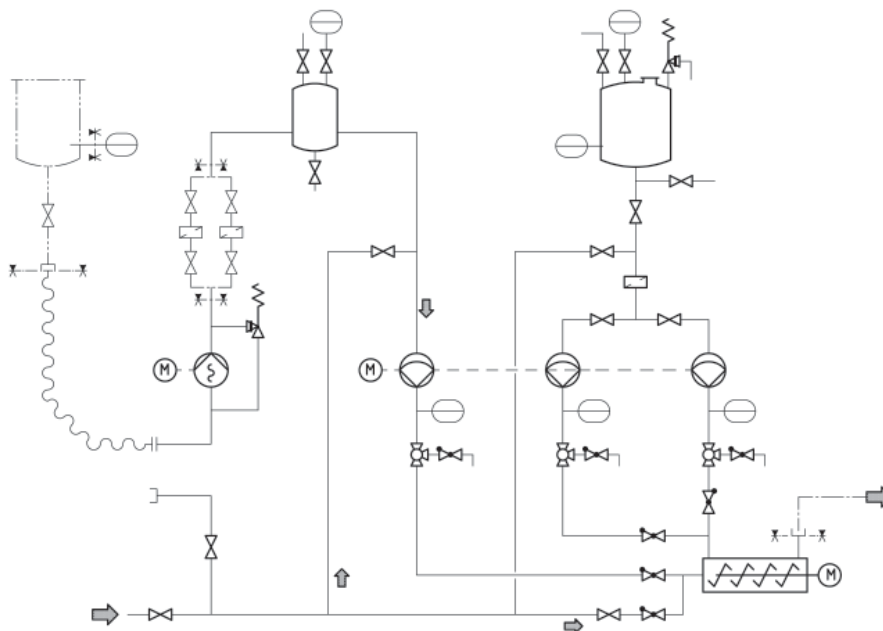
Continuous Production of Resin-and-Hardener Mixtures

Advantages

Continuous production of resin/hardener mixtures has largely replaced batch processes due to the following advantages:

- The improved quality enabled by just-in-time production.
- Avoidance of faulty batches (level sensors).
- Reduced material costs from tighter quantity control.
- Reduced cleaning costs; time savings, lower solvent use.

Simplified process diagram



Application

The continuous preparation of resin/hardener mixtures for the loading of impregnating tanks and molds with the aim of rationalizing manufacturing procedures.

System Operation

The metering pump draws each raw material directly from the reservoir; the ration of each component is determined by the panel stroke setting. An accuracy of at least $\pm 0.5\%$ of the metered volume can be guaranteed.

Resins, accelerator and inhibitor as required are pre-mixed in a mixing valve or pumped directly to the mixing head. The hardener is always introduced into the mixing chamber first, because accelerator and hardener must not come into direct contact due to the resultant exothermic reaction which could lead to an explosion. The curing time (pot life) begins with the addition of the hardener; this means that all subsequent procedures must be completed within a precisely determined time.

The following pipe contains special inserts to subject the liquid stream to intensive mixing in multiple separation, change of direction and combination stages (N-form mixers). Some applications use a further PENTAX mixer consisting of multiple rotors and stators.

Cleaning

Cleaning the metering and mixing assembly is particularly important, as hardening inside the system must be avoided at all costs.

Cleaning demands pumping a pressurized solvent such as acetone or methylene dichloride through the mixing chamber to all areas where resin/hardener mixture could accumulate. The cleaning procedure automatically starts when the system shuts down and before the pot life has elapsed.



Your local contact:



Bran+Luebbe, An SPX Brand
611 Sugar Creek Road, Delavan, WI 53115
Phone: (800) 252-5200 or (262) 728-1900, Fax: (262) 728-4904
E-mail: bl@spx.com

For more information about our worldwide locations, approvals, certifications, and local representatives, please visit www.branluebbe.com.

SPX Corporation reserves the right to incorporate our latest design and material changes without notice or obligation. Design features, materials of construction and dimensional data, as described in this bulletin, are provided for your information only and should not be relied upon unless confirmed in writing.