

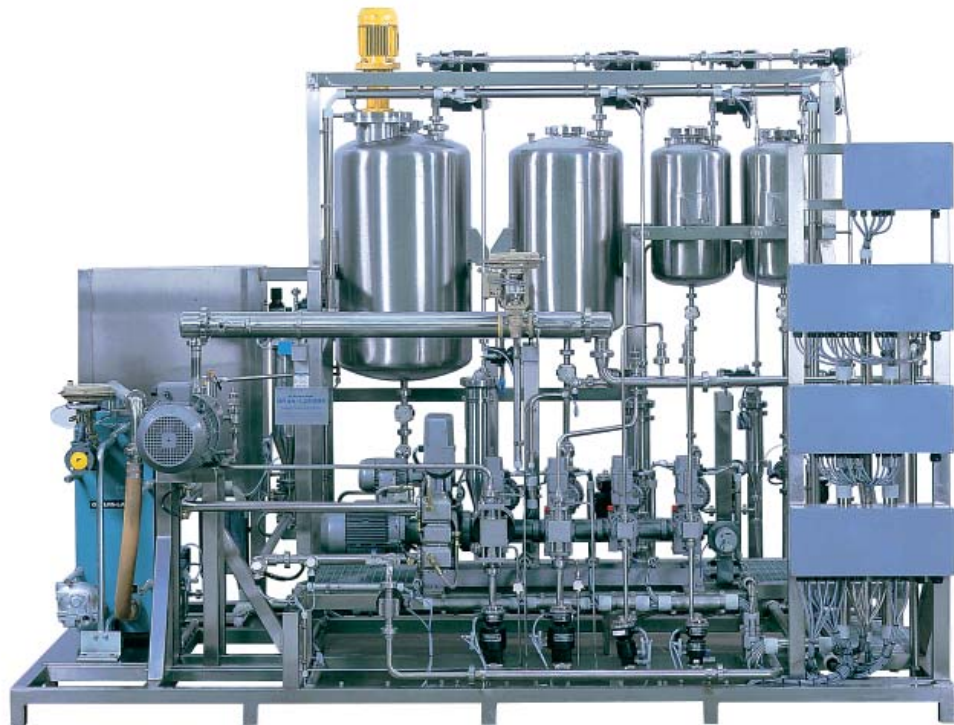


AutoBlend Systems

Body Lotion Production

Advantages

- Continuous production enables sterile operation and direct transfer to the filling station.
- No air introduction to finished product.
- Constant product quality.
- Flow-through cleaning and sterilization with automatic CIP-system.



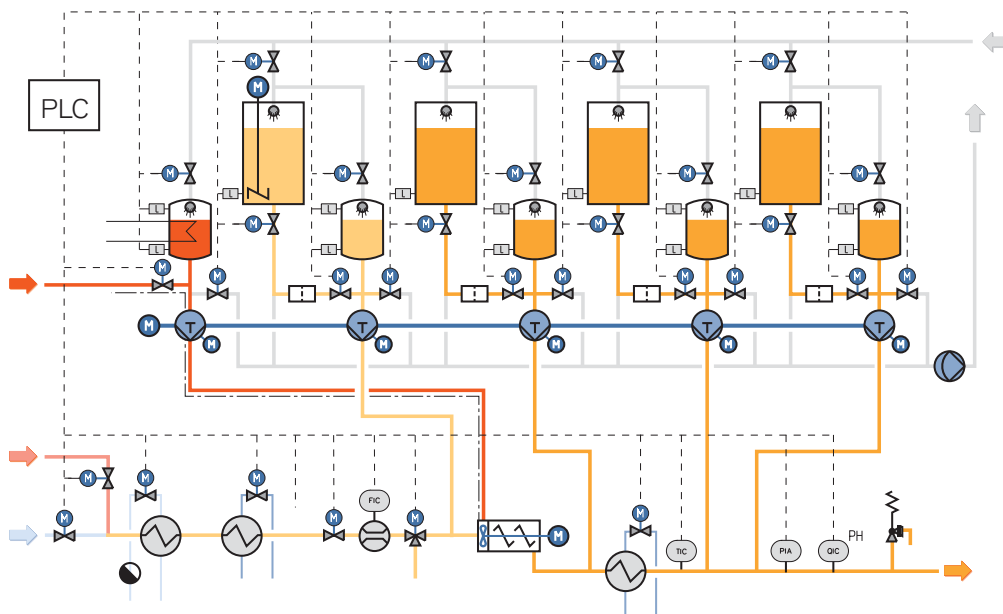
Continuous production of high quality body lotion is achieved using a Bran+Luebbe metering and mixing system, incorporating emulsification with a Bran+Luebbe PENTAX mixer.

The end-product is cooled in a tube heat exchanger. The computer-controlled system uses both mass flowmeters and LIV stream monitoring. The aseptic design includes a CIP cleaning system.

Components

- 1 Type KH metering pump with electric delivery volume control, plunger pump head.
- 4 Type P metering pumps with electric delivery volume control, 4 plunger pump heads (1 pump head heated).
- 1 PENTEX dynamic mixer.

Simplified process diagram



- 3 pipe heat exchanger in sanitary design.
- 1 online mass flowmeter.
- 1 online pH-analyzer.
- 1 online viscosity analyzer.
- Automatic valves.

Automation

- Fully automatic process control.
- Recipe and product management with data report.
- Automatic product monitoring with control loop.
- Automatic shut down if any ingredient runs out.



Your local contact:

Bran+Luebbe, An SPX Brand
 611 Sugar Creek Road, Delavan, WI 53115
 Phone: (800) 252-5200 or (262) 728-1900, Fax: (262) 728-4904
 E-mail: bl@spx.com

For more information about our worldwide locations, approvals, certifications, and local representatives, please visit www.branluebbe.com.

SPX Corporation reserves the right to incorporate our latest design and material changes without notice or obligation. Design features, materials of construction and dimensional data, as described in this bulletin, are provided for your information only and should not be relied upon unless confirmed in writing.