

SPX FLOW TECHNOLOGY
NORDERSTEDT GMBH
WERKSTRASSE 4, D-22844 NORDERSTEDT
P.O. BOX 1360, D-22803 NORDERSTEDT
GERMANY

TEL |+49 | 40 522 02 0
FAX |+49 | 40 522 02 444

branluebbe@spx.com

www.spxft.com

QUOTATION

We appreciate your inquiry and quote according to the General Terms and Conditions of Sale 05 recallable until confirmation of order:

Metering Pump Type *ProCam Smart DS50/72* EUR 669,--
Technical Specification acc. to page 2

Conditions of sale:	ex works without packing, tax or duties or transport insurance. Extra price for CIF Job site within Germany/Austria/Switzerland: EUR 65,--.
Terms of payment:	30 days net cash after invoice date.
Validity:	These prices are valid for orders received before the 31st. December 2012.
Delivery time ex works Norderstedt:	2 Weeks a.r.o.
	Country of origin: Germany Customs Tariff Number: 84.13.50 40
Warranty:	According to item 5 of the "General Terms and Conditions of Sale 05" 24 months after delivery.
Operating manuals:	The price includes 1 copy.

SPX Flow Technology Norderstedt GmbH
Sales Bran+Luebbe Pumps & Systems

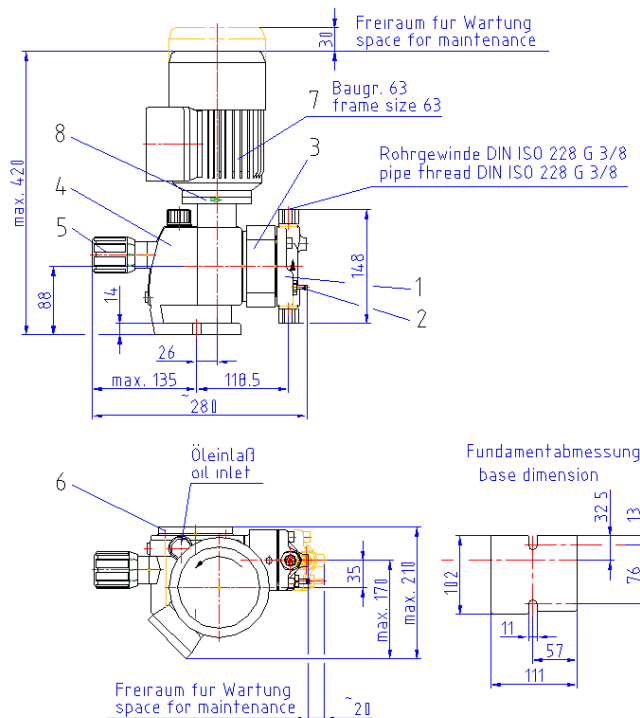
Technical Specification:

Type / Stroke speed [1/min]	Flowrate [l/h]	max. Pressure [bar]	Connections [female thread ISO228]	Motor [kW / V / Hz]	Idt.Nr
DS50/50	17,5	10	G 3/8	0,18 / 400 / 50 / IP55	440238
DS50/72	25	10	G 3/8	0,18 / 400 / 50 / IP55	440237
DS50/100	35	10	G 3/8	0,18 / 400 / 50 / IP55	440236
DS50/144	50	10	G 3/8	0,18 / 400 / 50 / IP55	440235

The Pump is suitable for the following Operation Parameters:

Pumping Fluid:	must be compatible with SS 1.4571/1.4581 and PTFE
Viscosity:	max. 500 mPas
Specific Gravity:	1 to 2 g/cm ³
Medium-Temperature Range:	0°C to +80°C
Ambient Temperature Range:	0°C to +40°C

Dimensions:



ProCam Smart DS 50

1-Pump Head / 2-Diaphragm Condition Monitoring / 3- Pump Yoke / 4- Gear Box / 5-Vernier Scale Stroke Adjuster / 6- Cover / 7-Motor / 8-Motor Adaptor Flange

Paint Work: Yellow-Green (RAL 6018)