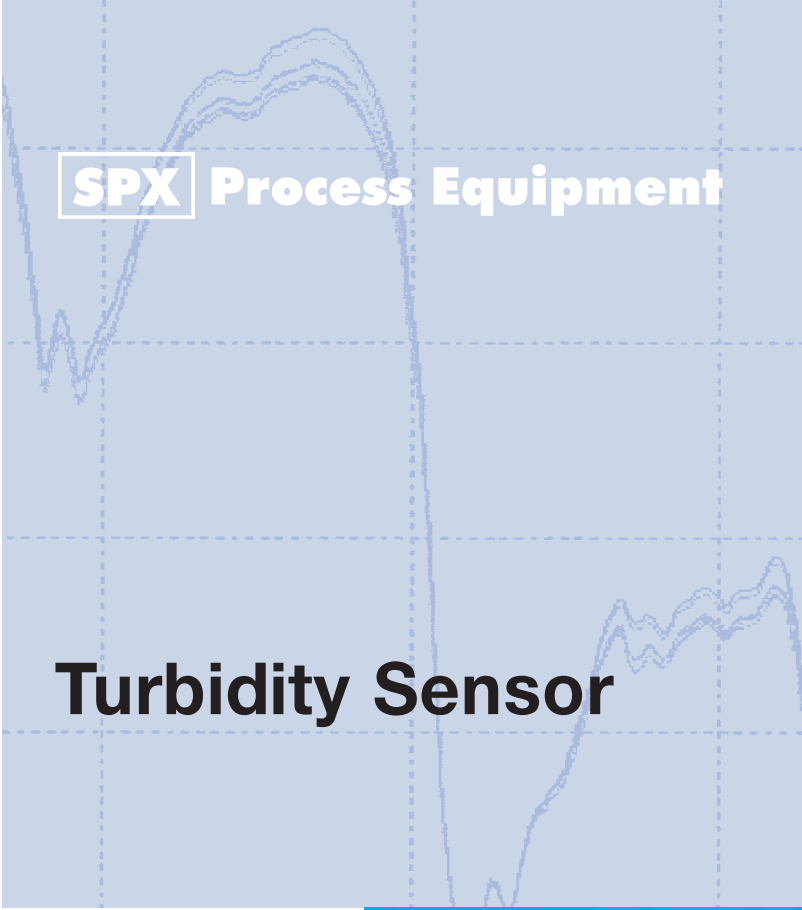
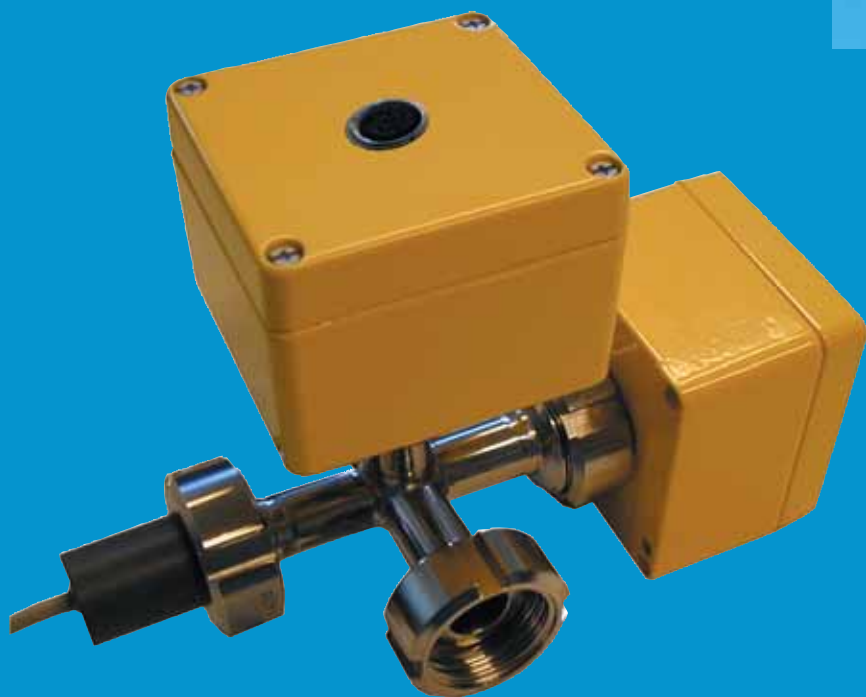


Turbidity Sensor



NEW!



Turbidity Sensor

The turbidity sensor uses a combination of transmission and 90° scattering in a flow-through system. The two photodetectors for scattered and transmitted light and the light source (IR-LED) are situated in a flow-through system made of stainless steel (V4A).

It can be used to determine the turbidity of fresh water and seawater or other liquids and is designed to be part of a flow-system that is optimised for water quality monitoring.

The sensor can be modified to the customer's needs regarding measuring range and accuracy.

The response time is less than 5 seconds. The turbidity sensor provides the sensitivity, accuracy and long-term stability required for the continuous measurement of turbidity in estuaries and lagoons.

Item-Number	48 806 600 D0 A
Range	2 to 1000 FNU
Accuracy	3 % of the measured value
Response time	< 5 seconds
Resolution	1 FNU
Ambient temperature limit	Storage: -10°C to +45°C Operation: - 4°C to +45°C
Power supply	24 V _{DC} , 2 W
Dimensions (widthxheightxdepth)	200x127x80 mm
Weight	approx. 2100 g
Type of sensor/Measuring principle	nephelometric, with infrared-LED
Protection class	IP 65
Interface	CAN-Bus